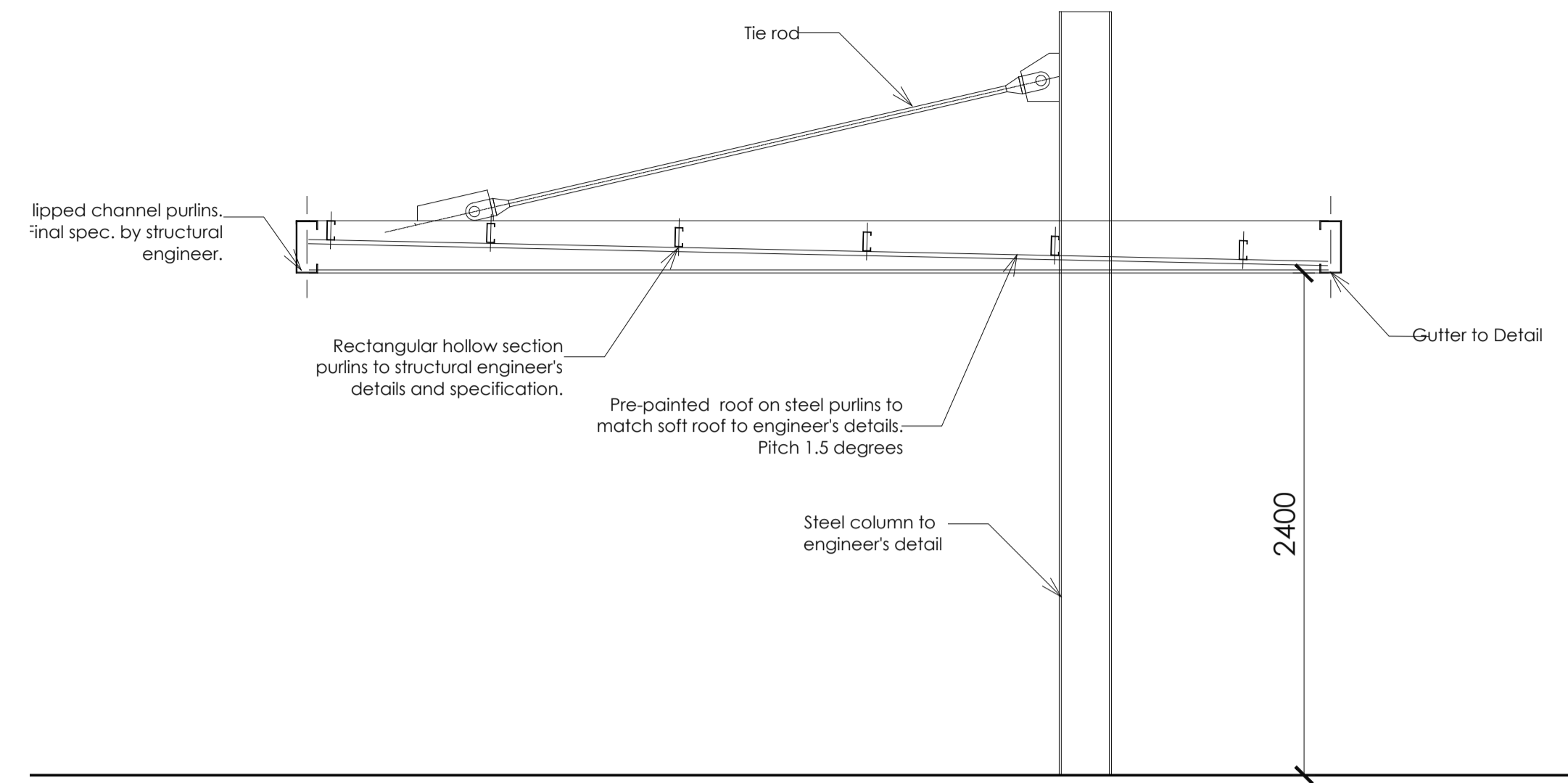
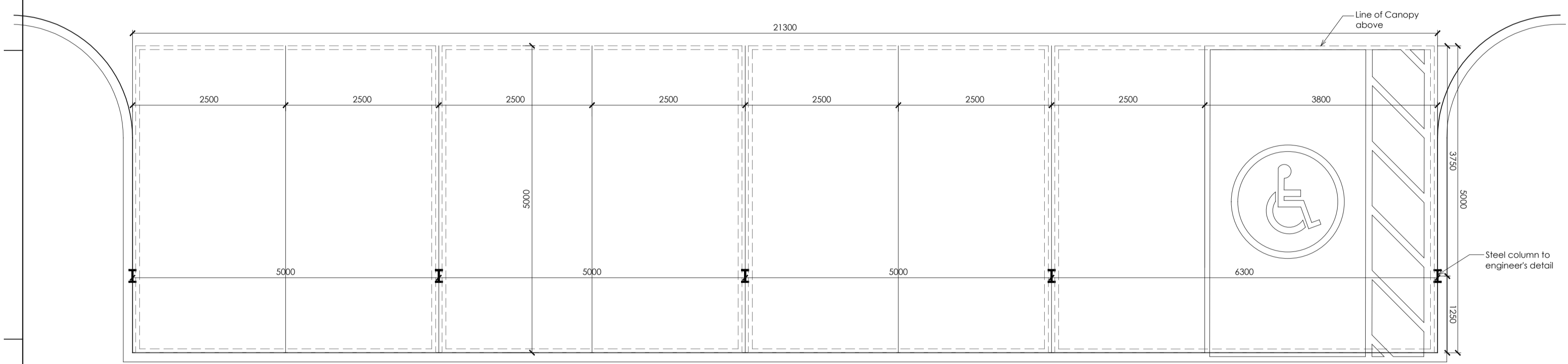


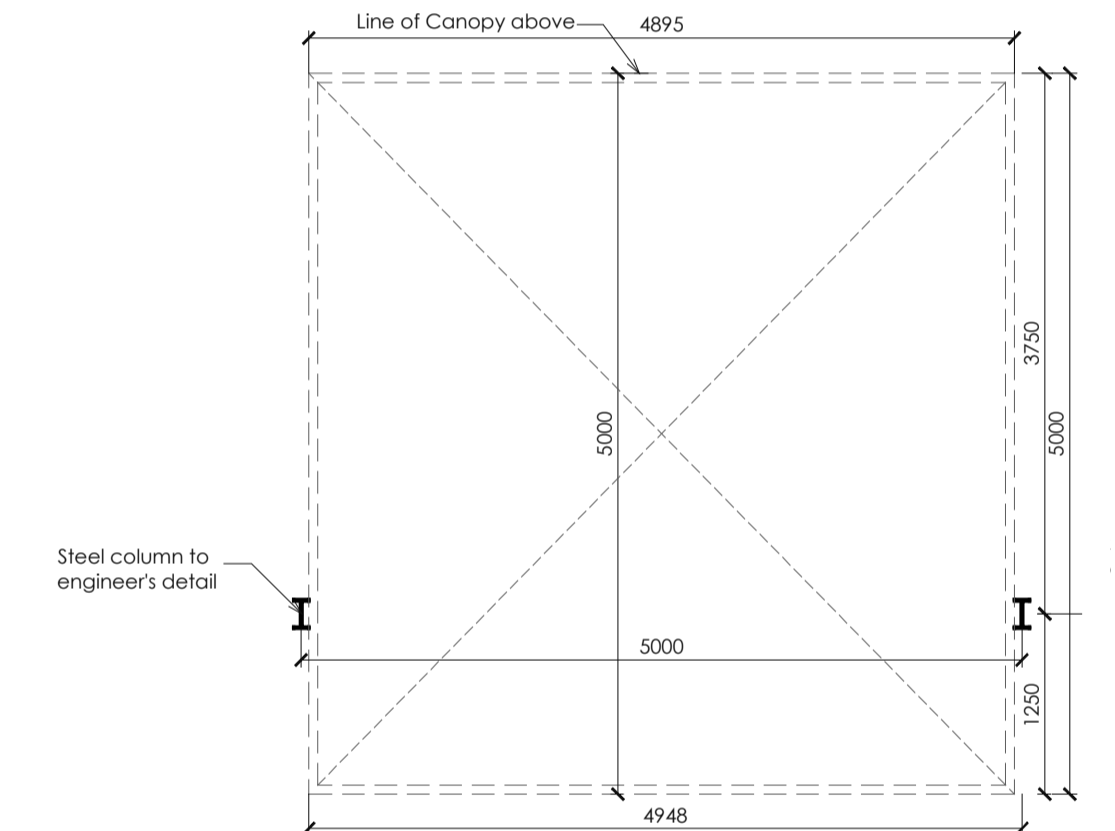
TYPICAL CARPORT
SIDE ELEVATION
Scale 1:25



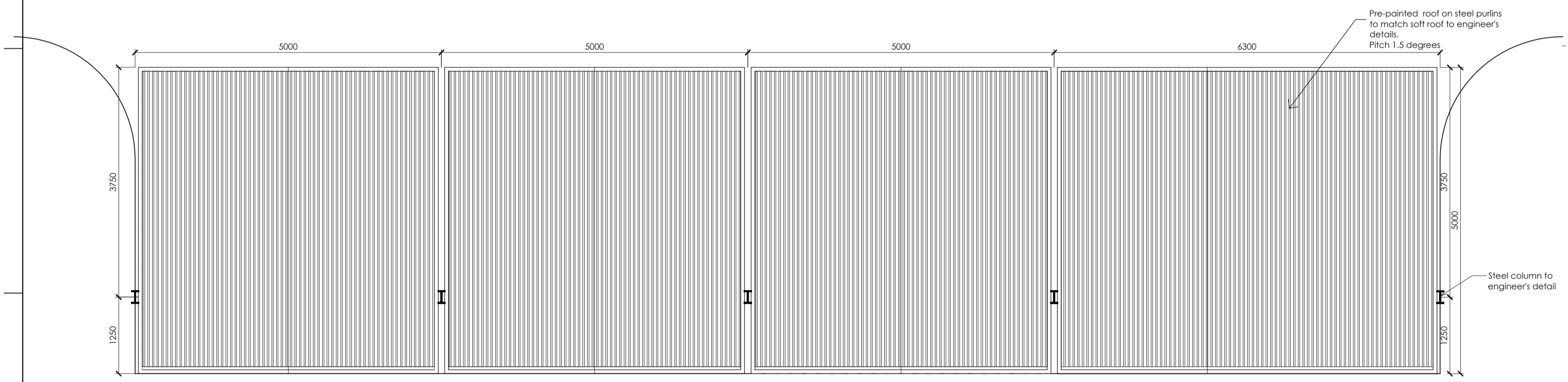
TYPICAL CARPORT
FLOOR PLAN
Scale 1:25



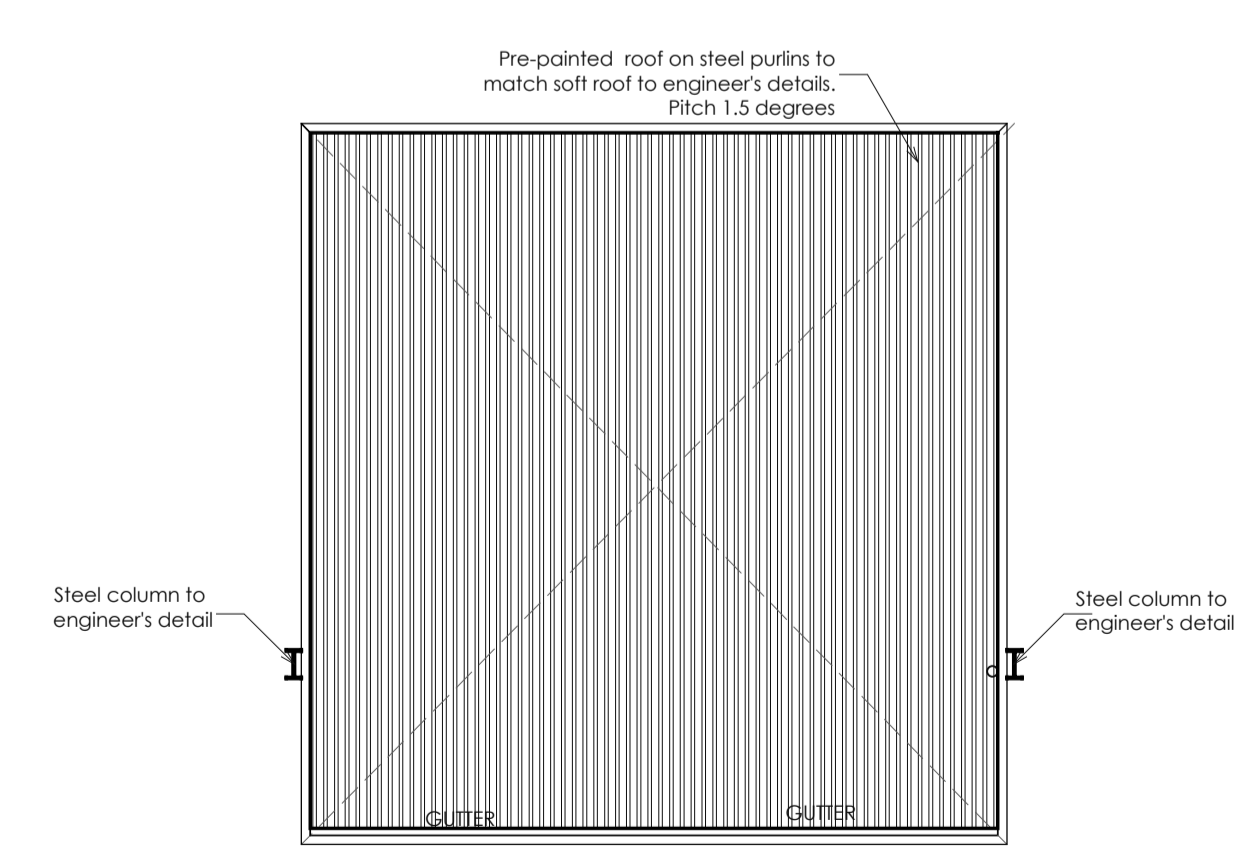
TYPICAL CARPORT
FLOOR PLAN



TYPICAL BUNGALOW CARPORT
FLOOR PLAN
Scale 1:25



TYPICAL CARPORT
ROOF PLAN




TYPICAL BUNGALOW CARPORT
ROOF PLAN
Scale 1:25

- GENERAL NOTES:
1. NO DIMENSIONS TO BE SCALED.
 2. DIMENSIONS TO BE VERIFIED ON SITE BEFORE COMMENCING ANY SITE WORK OR SHOP DRAWINGS.
 3. DIMENSIONS ARE TAKEN TO CENTRE LINES OR STRUCTURAL SURFACES AND DO NOT INCLUDE FINISHES EXCEPT WHERE OTHERWISE STATED.
 4. THE ARCHITECT IS TO BE NOTIFIED OF ANY DISCREPANCIES BETWEEN THIS DRAWING AND ANY OTHER DRAWING OR CONSTRUCTION DOCUMENTS INCLUDING THOSE ISSUED BY CONSULTANTS AND NOMINATED SUB-CONTRACTORS BEFORE COMMENCING WORK.
 5. MINIMUM STRENGTH POE CONCRETE 21Mpa

ISSUED FOR
MEASUREMENT
PURPOSES

REV.	DESCRIPTION	DATE
5	CLIENT	
6	DWG TITLE	
7	DRWG. No.	

CLIENT


SOUTHERN AFRICAN
DEVELOPMENT COMMUNITY

JOB TITLE

SADC STANDBY FORCE REGIONAL
LOGISTICS DEPOT, AT RASESA,
GABORONE, BOTSWANA,

DWG TITLE

CARPORT DETAILS

SCALE AS SHOWN JOB No. G649

DATE MAR 2022 DRAWN BY KT

REV. A CHECKED BY AM

Project Team:

Architect	FMA Architects
Quantity Surveyor	Tanner & Townsend (Pty) Ltd.
Electrical Engineers	G4 Consulting Engineers (Pty) Ltd.
Mechanical Engineers	G4 Consulting Engineers (Pty) Ltd.
Civil Engineers	Botlaga Harrow Botswana (Pty) Ltd.
Structural Engineers	Botlaga Harrow Botswana (Pty) Ltd.

FMA FMA ARCHITECTS (PTY) LTD.
P.O. BOX 201504 BONTLENG
GABORONE, BOTSWANA.
TEL: 3959812/3 FAX: 3959814
E-MAIL: fmagabs@info.bw

DRWG. No.

G649-SADC/ARCH/2/00 / 1-008